

Jefferson County Library District  
Functional Space Program and Existing Property Study  
Findings Presentation

August 11, 2020

**I. Completed Tasks:**

- 1.1 Functional Space programming needs assessment: 22,000 GSF.
- 1.2 Functional Space Diagrams and Layouts.
- 1.3 Existing Library and Annex Building Site Analysis and Map.
- 1.4 Library Spaces Block Plans. Holdings capacity: 43,000 Items.
- 1.5 Existing Shelf Inventory and Holdings Capacity: 47,000 Items.
- 1.6 Land use meeting with Planning Director Nick Snead.

**2. Madras Redevelopment Commission: Civilis Consultants Report, May 2019**

- 2.1 Madras Downtown Study Area Boundaries:
  - \* Northern: 'B' Street
  - \* Southern: 'G' Street
  - \* Western: 1st Street
  - \* Eastern: 8th Street
- 2.2 Downtown Vitality:
  - \* 'Front Door' -Retail Corridors.
  - \* 'Aisles' -Streets and Pedestrians
  - \* 'Fixtures' -Density and Activity
  - \* 'Products" -Ground Floor Activity
- 2.3 Civilis Conclusions: Building Improvement Programs:
  - \* Adaptive Re-use (WCC Site)
  - \* Installation of Public Art
  - \* Zoning Policy Activity mix, increased density
  - \* Remove parking minimums

**3. Existing JCLD Property**

- 3.1 Immediate Site Study Area: 36,250 square foot combined parcels:
  - \* Tax Lot 8300: R2 Zoning, Rental Duplex 1,250 SF
  - \* Tax Lot 8400: R2 Zoning, Rental Duplex 5,000 SF
  - \* Tax Lot 8500: OS Zoning, Annex Building 10,000 SF
  - \* Tax Lot 8600: OS Zoning, Library Building 15,000 SF
  - \* Tax Lot 8700: C2 Zoning, Rental Duplex 5,000 SF

- 3.2 Zoning Issues:
- \* Tax Lots 8300 and 8400 would require a zone change from R2 to OS Zoning to permit public library conditional uses.
  - \* Tax Lot 8700 permits library uses without zone change.
  - \* Tax Lots 8500 and 8600, No zone change required.
  - \* Off Street Parking: Current parking spaces for Lots 8500 and 8600 estimated at 14 spaces. The parking lot across 7th Street estimated at 20 spaces. 30 parking spaces are required for the square footage of the current library buildings.
  - \* No Flood Plain/Flood Way issues pertaining to the existing site is contemplated after 2021-2022.
- 3.3 Land Use:
- \* Existing Buildings land coverage= 7,886 SF equivalent to 32% land coverage. (Total land area = 9,000 SF for Tax Lots 8500 and 8600)

#### 4. Concept/Schematic Design

- 4.1 Land Use and property coverage:
- \* The example conceptual/schematic design covers 18,710 SF (60%) over Tax Lots 8300, 8400, 8500, and 8600 (Total land area of 31,250 SF)
- 4.2 Total Building Area:
- \* The plan represents 22,360 GSF compared to 21,918 GSF expected under the Functional Space Program. Space requirements require a two-story scheme to fit within the available site area.
- 4.3 Zoning Requirements and Required Off-Street parking:
- \* Current parking requirements for public library use is one parking space for every 300 SF of enclosed facility. (75 Off-Street spaces would be required by Code)
  - \* The proposed Site Plan indicates a maximum achievable 16 on-Site parking spaces plus 20 estimated across 7th Street = 36 possible parking spaces representing a deficit of 39 parking spaces.
  - \* Building setbacks and maximum building height comply with planning Codes.

#### 5. Concept/Schematic Design Attributes      Testing the Functional Space Program:

- \* Drive through Book Return directly into the North side of the building
- \* Public entry from North and South directions into the public lobby.
- \* Exterior public spaces to the South and from the Library Programs area.
- \* Collections open space and staff area flexibility for growth and change.
- \* Public use space priority. Multi-function capability.
- \* Use of natural materials within the interior and sustainable building envelope materials for the building exterior.

#### 6. Conclusions

- 6.1 The existing site can accommodate the Functional Space Program on two stories providing a settlement of existing parking requirements. It would be difficult meeting off-street parking even using Tax Lot 8700 for additional parking.

- 6.2 Future land use of the property and surrounding neighborhood:

The trend for higher density and increased property values may prevail if the Civilis study is seriously considered by City planners. Current Library property is contiguous to the growth and improvement of the city core area. Two to three story higher density multifamily housing and multi-use commercial and office development for the library property would support desired downtown revitalization within the central area of Madras.

6.3 WCC Site:

The future community center site is well situated to serving higher density and preferred public activities within the Madras central core. .The WCC is the Southern gateway to the proposed new Madras public services and commercial downtown corridor.

The WCC Site meets the goals of Library siting criteria in terms of public identity and exposure, central to library patrons within the served population, adjacency to other public services, adequate land for facilities and parking, and adequately served by public transportation routes, and compatibility with adjacent land uses.

**7. Next Steps for Library Planning**

- 7.1 Wait until the WCC concept becomes a reasonable possibility and continue to work with the Bean Foundation to keep options open. Participate in the WCC planning process in a productive manner
- 7.2 Study the possibility of moving to the WCC Site under favorable conditions:
  - \* acquisition of an adequate Library Site in support of Library District goals and policies at reasonable cost.
  - \* Compatibility with the proposed community center program and facilities design as a major public entity within the WCC Campus Center.
  - \* Adequate pedestrian and vehicular access to and within the WCC Site
  - \* Minimum adequate parking to serve library patrons.
- 7.3 Utilize completed space planning and pursue further Schematic Design studies within the WCC Site in developing an attractive catalyst for long range District Library Planning. Create more accurate facilities expansion budgets for informed public involvement and comment.

2818 NW Beuhla Vista Terrace . Portland, Oregon 97210  
Voice 503.223.0222 Cell 971-275-5958 fcgastjrfaia@comcast.net

**Jefferson County Library District  
Library Programming and Existing Site Analysis**

**Initial Functional Space Programming Meeting Agenda  
Madras, Oregon January 6, 2020**

**1. Attendee Introductions:**

**2. Overview of Library programming process:**

- 2.1 Analysis/Documentation of existing Library Building; Space size, configuration, and functional uses. Of Library Building and Annex facility
- 2.2 Staff / Board Member Interviews Review/Discussion ; Library Mission Statement / Public Service Goals, and long-range Library Services vision
- 2.3 Identify Functional Space program needs for evolving County Library services in serving Jefferson County and develop preliminary Space Program
- 2.4 Draft Preliminary Functional Space Program Report and review with Staff, Board Members, Community Representatives as required

**3. Functional Space Programming:**

3.1 Functional Space Programming Input:

- \* **Library Programs:** Meeting Space(s)  
Public computer access, self checking  
Continuing Education  
Reading/Lounge  
Friends of the Library  
Inter Library Loans
- \* **Library Users:** Adults  
Young Adults  
Children
- \* **Library Support:** Technical Services  
Circulation Services  
Staff Work Space(s)  
Staff Support Area: Break, Restroom,  
Lockers, etc.
- \* **Library Collections:** Fiction/Non Fiction, Hard Back, Paperback  
Reference  
Periodicals  
Electronic: CD, DVD, On-line catalog, Other  
Media
- \* **Library Services:** Current and Projected: General, Home  
Schooling, Tutoring, etc. Library District out  
reach

**4. Library Site Considerations:**

- 4.1 Public Access to Library Site
- 4.2 Building Site Access
- 4.3 Patron Parking; On Site and Off Site
- 4.4 Land use considerations: Flood Plain, adjacent District properties, changes in adjacent land uses and serving utilities, etc. Nearby public use spaces
- 4.5 Open Space, on and off site, exterior Library Service use
- 4.6 Future Site Utilization, space for program change/growth

**5. Next Planning tasks:**

- 5.1 Preliminary Block Plans/Diagrams
- 5.2 Site Utilization Plan(s), coordination with local Zoning land use regulations
- 5.3 Follow-up Meetings/Presentation to Staff, Board Members, and General Public as required

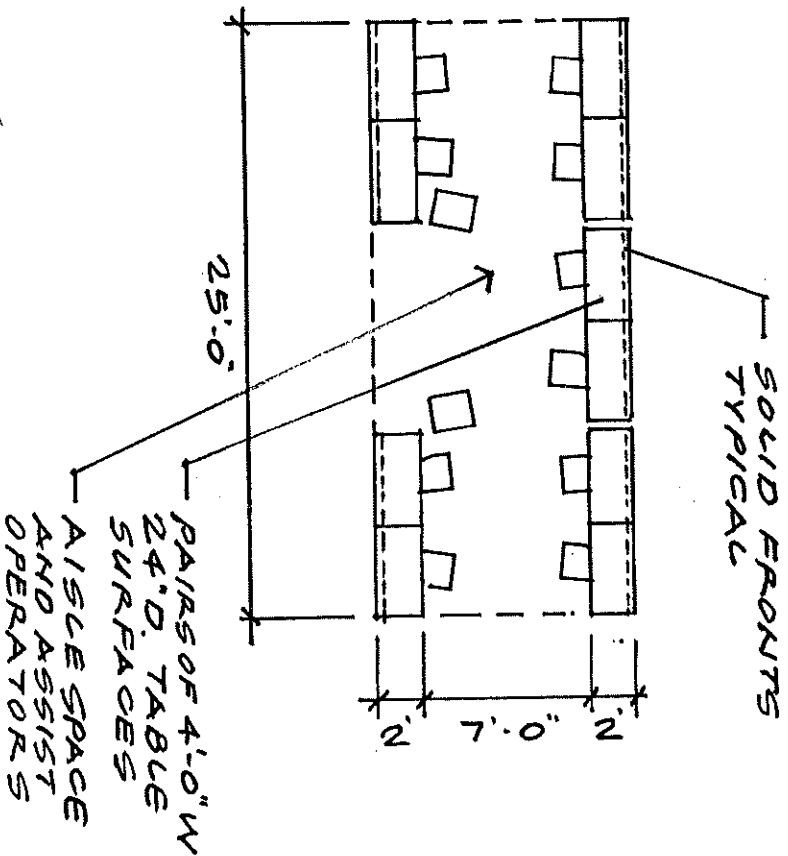
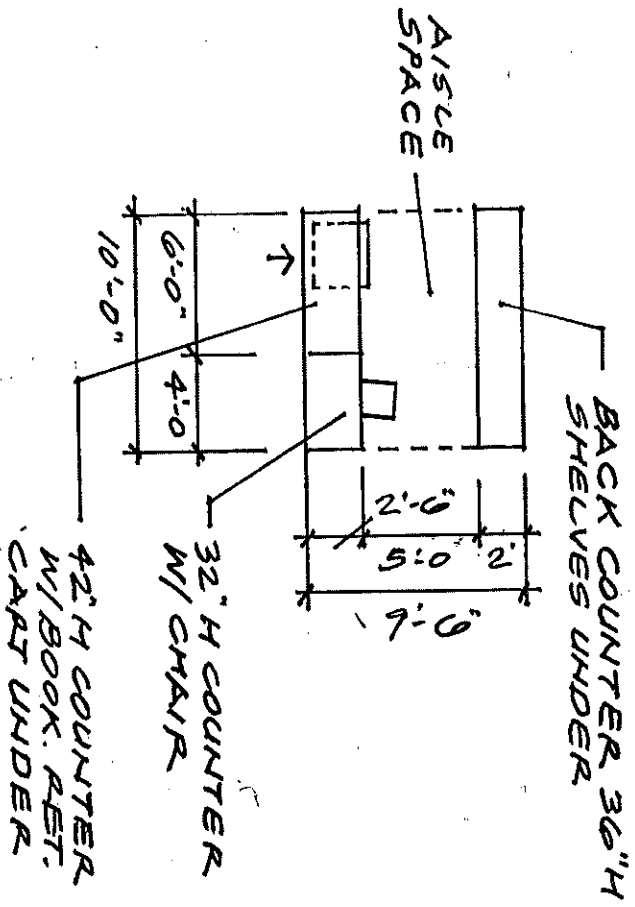
**6. Other Subjects:**

Jefferson County Library District

Functional Space Program

January 2020

Functional Program Diagrams



CIRCULATION DESK  
1/8" = 1'-0"  
NO. 1

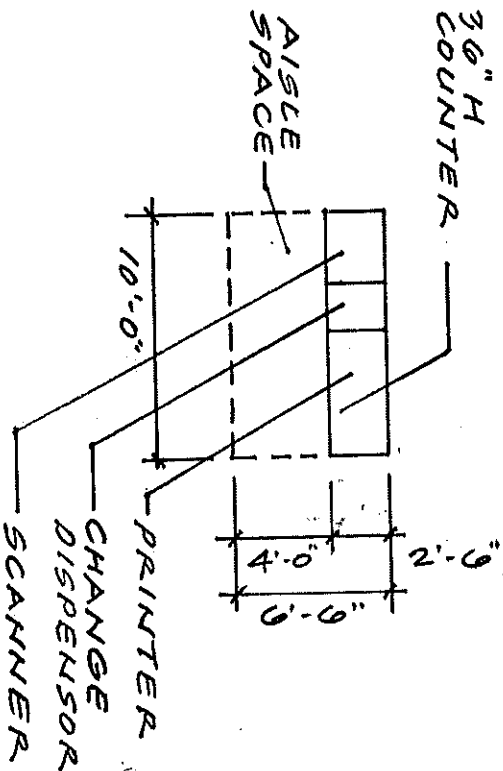
PUBLIC ACCESS COMPUTERS  
1/8" = 1'-0"  
NO. 2

**Jefferson County Library District**

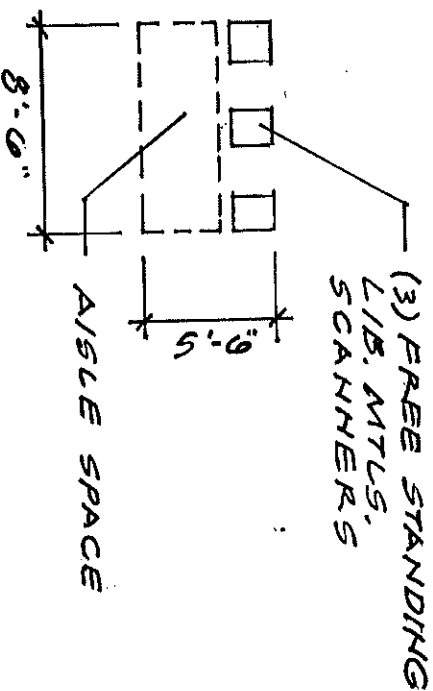
Functional Space Program

January 2020

Functional Program Diagrams



PUBLIC SERVICE PRINTER  
 1/8" = 1'-0" NO. 4



ALTERNATE METHOD:  
 36" H, 20" D, 8'-6" LONG  
 COUNTER W/ (2) SCANNERS  
 W/ SIMILAR SPACE REQR.  
 ADD SMALL TABLE FOR  
 BOOK BAGS

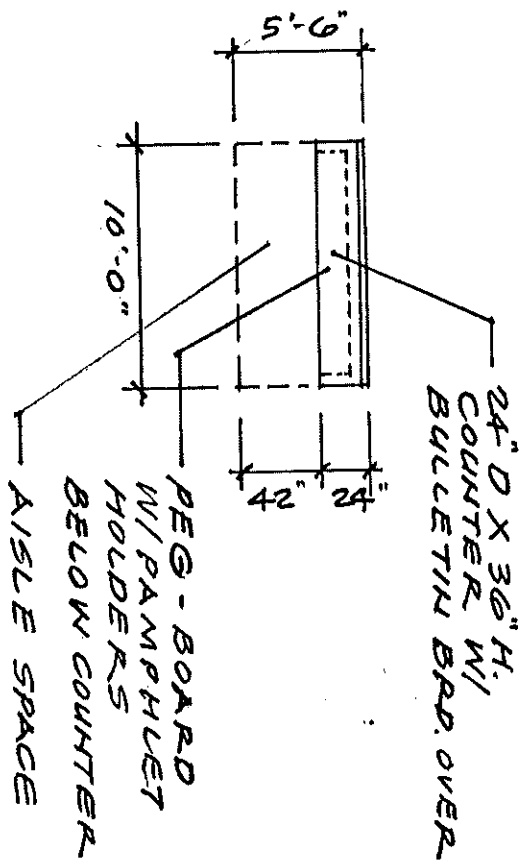
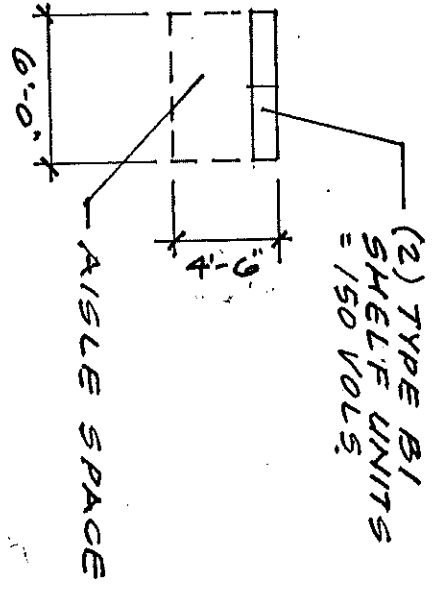
SELF CHECK  
 1/8" = 1'-0" NO. 9

**Jefferson County Library District**

Functional Space Program

January 2020

Functional Program Diagrams



LIBRARY HOLDS  
1/8" = 1'-0"  
No. 7

PUBLIC NOTICES  
1/8" = 1'-0"  
No. 8

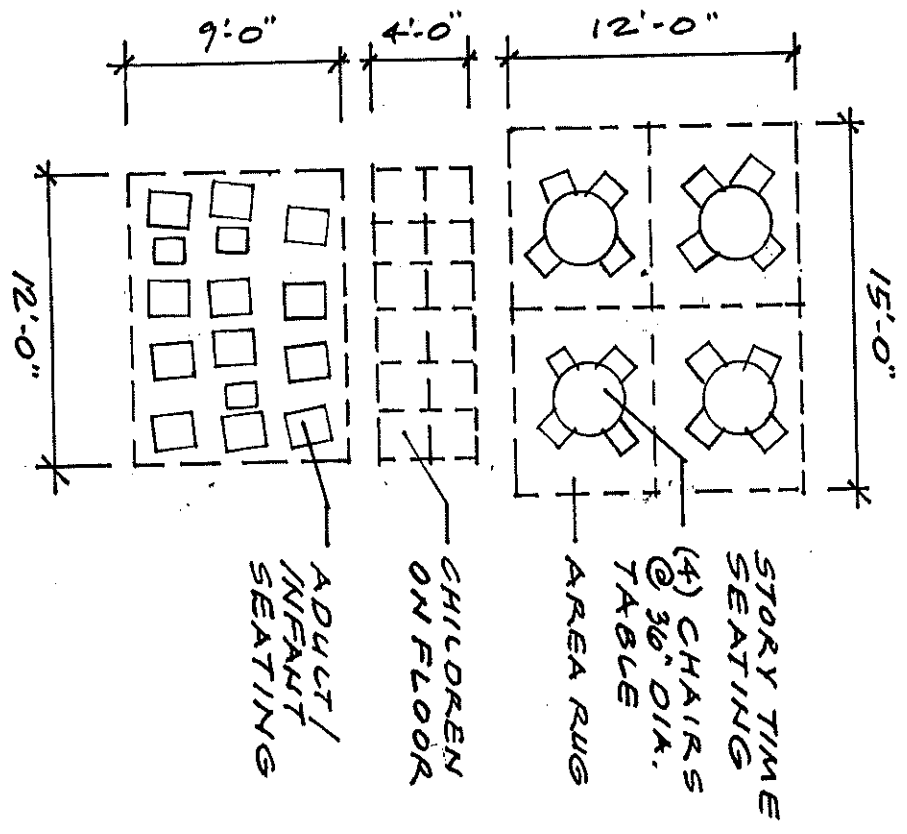


Jefferson County Library District

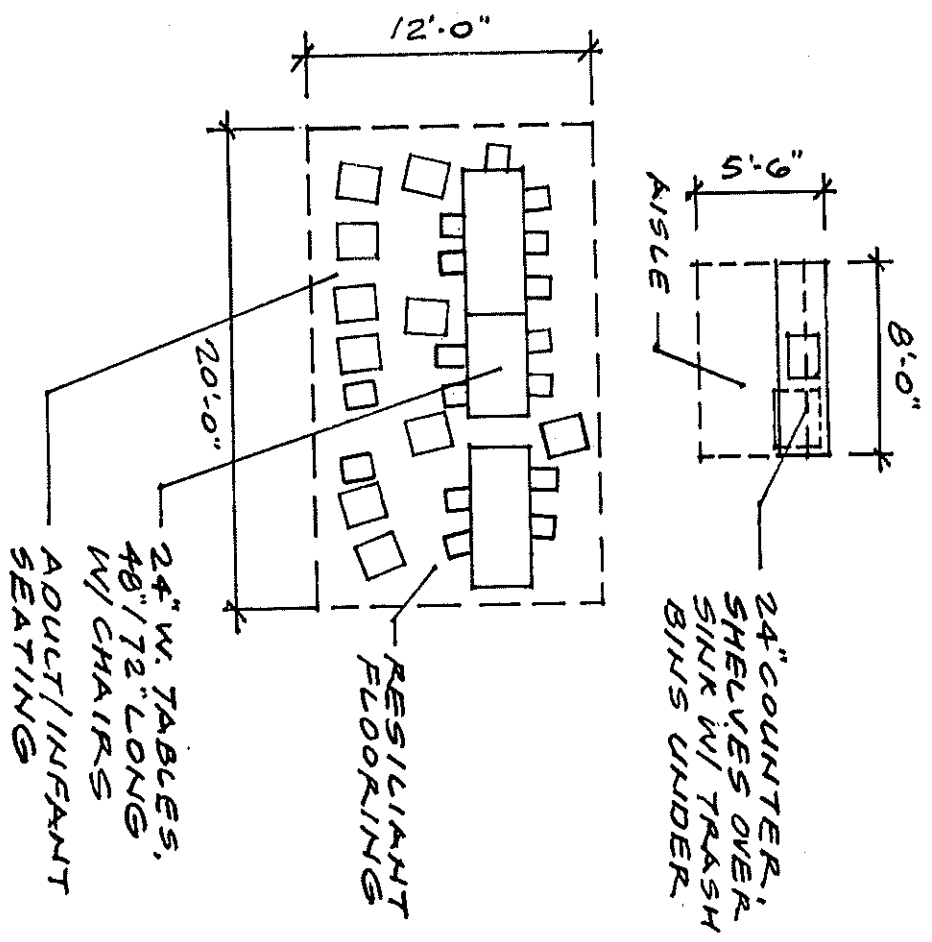
Functional Space Program

January 2020

Functional Program Diagrams



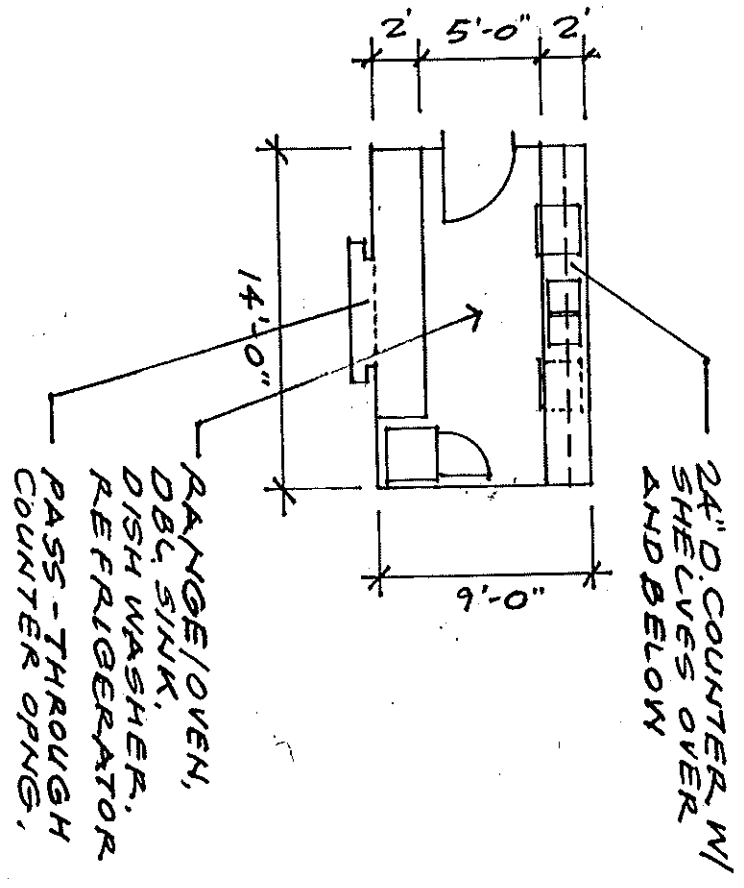
CHILDREN'S SECTION SEATING  
 1/8" = 1'-0"  
 NO. 12



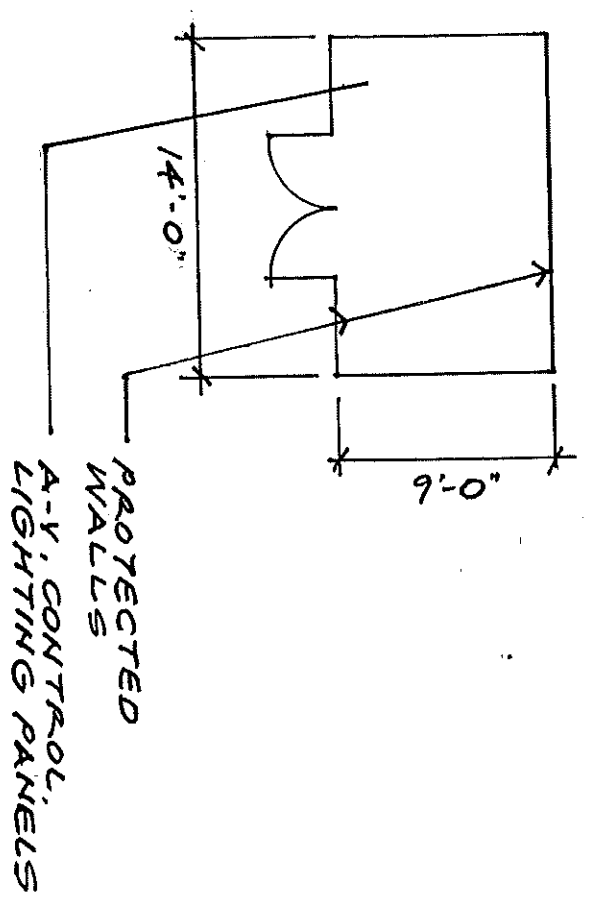
CHILDREN'S ACTIVITIES  
 1/8" = 1'-0"  
 NO. 12

Jefferson County Library District  
Functional Space Program

January 2020  
Functional Program Diagrams



SERVICE KITCHEN  
1/8" = 1'-0"  
NO. 15

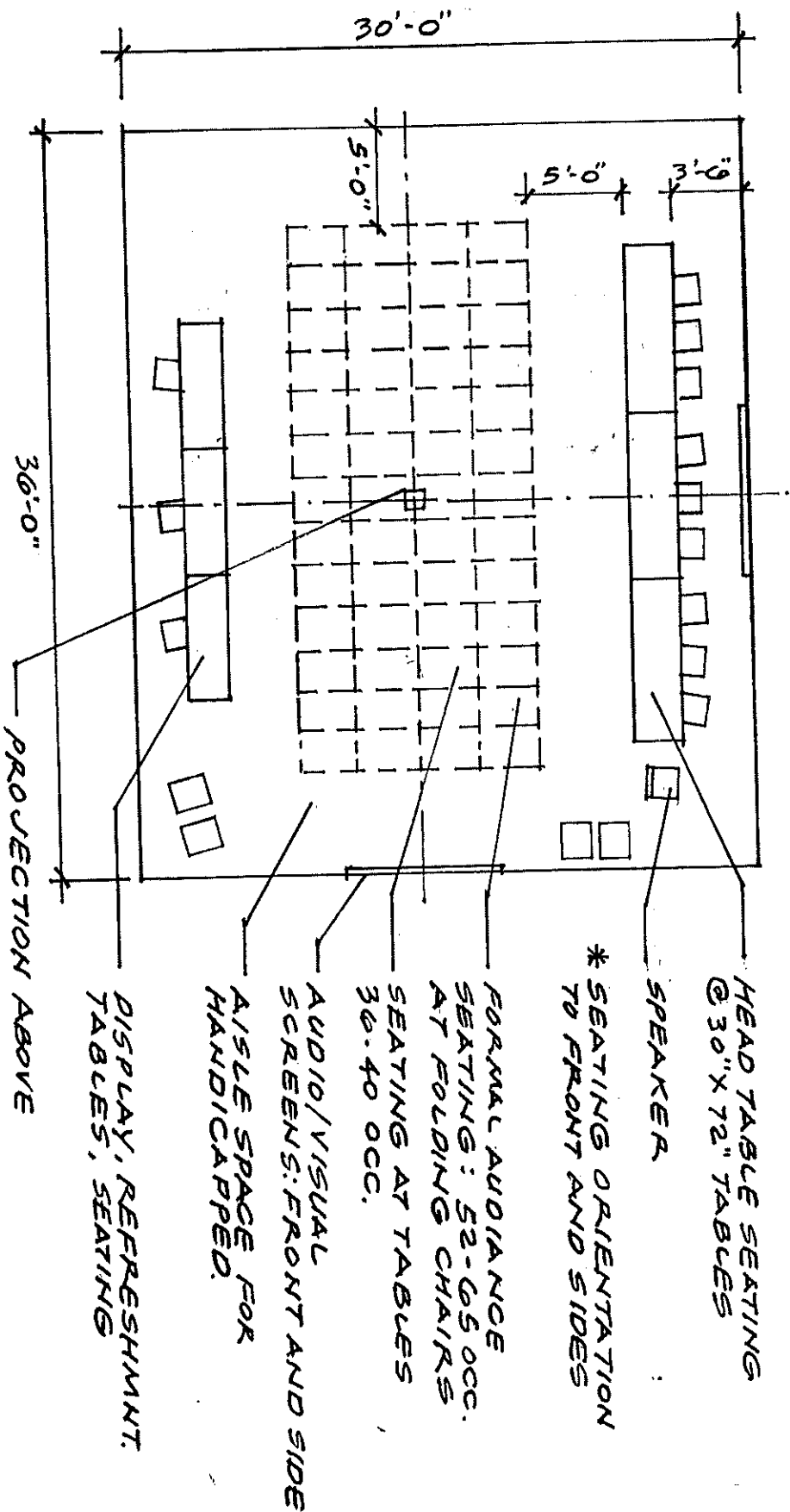


PROGRAM STORAGE RM  
1/8" = 1'-0"  
NO. 15

Jefferson County Library District

Functional Space Program

January 2020  
Functional Program Diagrams



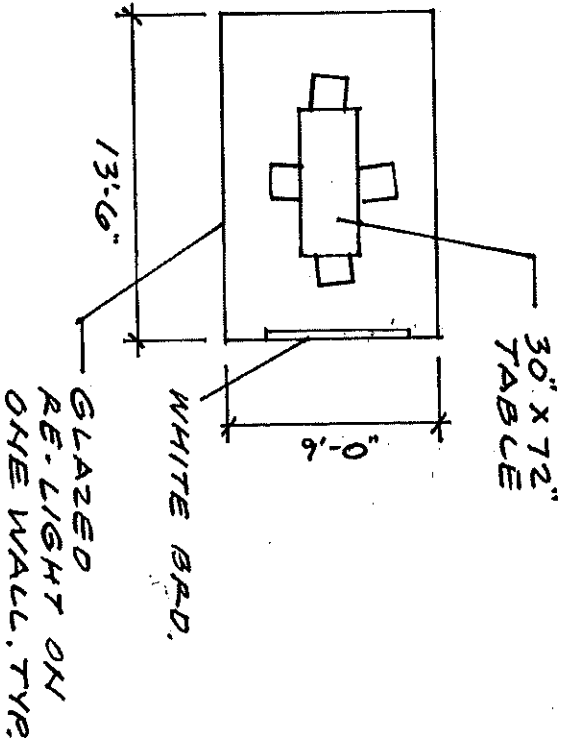
LIBRARY PROGRAMS ROOM  
1/8" = 1'-0"  
NO. 15

Jefferson County Library District

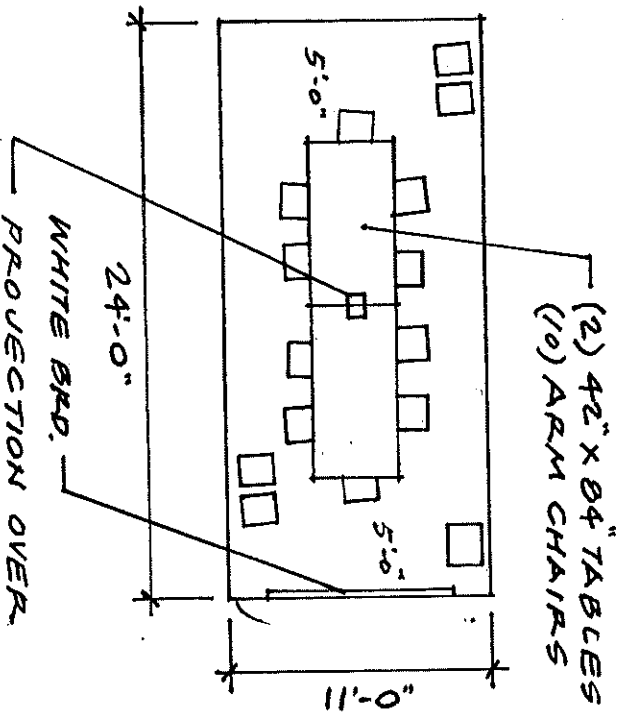
Functional Space Program

January 2020

Functional Program Diagrams



STUDY, MTG ROOMS  
NO. 14  
1/8" = 1'-0"

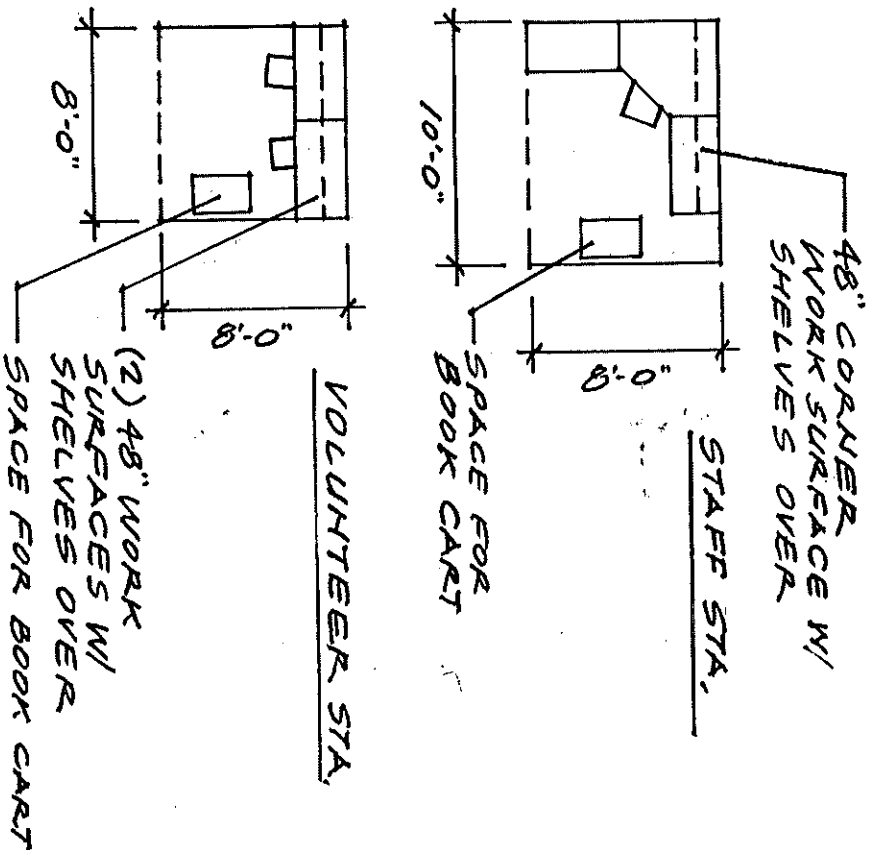


LIB. BOARD, MEETING RM.  
NO. 3  
1/8" = 1'-0"

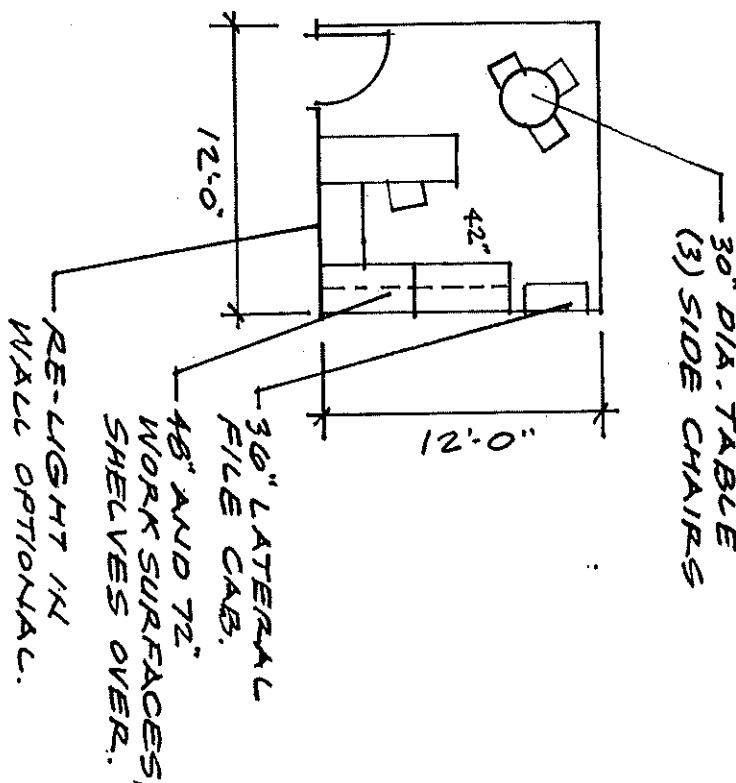
Jefferson County Library District

Functional Space Program

January 2020  
Functional Program Diagrams



STAFF, VOLUNTEER WORK STA.  
1/8" = 1'-0"  
NO. 1



DIRECTOR'S OFFICE  
1/8" = 1'-0"  
NO. 2

# Jefferson County Library District

Functional Space Program	Program Function:	Library Services Functions	7-Feb-20			
Space	Function	Occupancy	Size	Area	Adjacency	Notes
1.0	Circulation Desk	(2) Sta.	9.5 X 10	95	Entry, Foyer, Self Check out	30" and 42" counter heights, w/ book return provisions
2.0	Public Access Computers	(10) Sta.	11 X 25	275	Circulation Desk, Printer	Separated Seated Stations at counters space for assist operators
3.0	Microfische Readers	(1) Sta.	5 X 7	35	Public Access Computers	Seated Stations with lay-out counter space Printer capability
4.0	Public Service Printer	(2) Sta.	6.5 X 10	65	Public Access Computers	Standing Access front of desk/counter w/ printer scanner, payment center
5.0	Display Gallery	(20) Standing	24 X 40	940	Entry, Foyer, Programs Room	Incorporate w/ Entry/Foyer
6.0	Entry Vestibule	None	8 X 10	80	Entry, Foyer	(2) sets dbl doors, entry matt, doors w/ operators
7.0	Library Holds	None	4.5 X 6	27	Circ Desk, Foyer	Type B1 Shelving public accessibility
8.0	Public Notices, Pamphlets	None	5.5 X 10	55	Entry, Foyer	Slanted Shelving below bulletin board w/ peg brd. accessories
9.0	Library Self Check out	(3) Sta.	5.5 X 8.5	47	Circ. Desk	30" and 42" counter heights, space for stacking and bagging
10.0	Reading Lounge	(12) Seated	18 X 24	432	Library Collections	(8) Seated at tables, Fire Place Inglenook option (12) lounge seating W/ side tables
11.0	Young Adults Lounge	(8) Seated	16 X 18	288	Young Adults Collection	(4) seated at table, (4) lounge seating supervised viewing
12.0	Children's Section				Children's Collection	
	* Story Time, seating	(16) Children	12 X 15	180	Children's Librarian	Seated at 36" Dia. tables Children's scale
		(12) Adults	12 X 9	106		Lounge Seating and space for infants
		(12) Children	12 @ 4	48		Floor Space
	* Activity Area	(14) Children	12 X 20	240	Story Time, Librarian	Seated at tables Low Counter w/sink
		(10) Adults	10 @ 9	90		Seated/Standing
	* Children's Librarian	(1) Desk Sta.	10 X 15	150	Story Time, Children's Storage	Work Table Space w/ (3) chairs
	* Children Storage		5.5 X 8	44	Children's Librarian	w/ shelving
	* Children's Toilet Room	(2) child, adult	7 X 8	56	Story Time	Unisex, ADA accessible



# Jefferson County Library District

Functional Space Program	Program Function:	Library Support Functions	7-Feb-20			
Space	Function	Occupancy	Size	Area	Adjacency	Notes
1.0	Technical Services				Circulation Desk, Work Room	
	* Staff Work Stations	(4) Sta. Seated	16 x 20	320		Cataloging, processing, repair etc
	* Volunteer Stations	(2) Sta. Seated	8 x 16	128		Open work Stations
2.0	Library Director	1-4 Seated	12 X 12	144	Circ. Desk	(1) at Desk, (3) at small table
3.0	Library Board Room	(10) Seated	11 X 24	264	Public Area for multi-use Meeting room	Seating at Table space for 4-5 folding chairs White Board, side table
4.0	Staff Work Space	(4) Stations	16 X 16	256	Technical services	Standing at work tables or seated at desks
	Volunteers	(2) Stations	8 X 16	128		Standing at work tables or seated at desks
	Staff Break Room	(10) Seated	15 X 17	255	Work Room w/ exterior views	Lounge Seating, Sink counter, microwave, dish washer, refrigerator, etc.
6.0	Staff Restroom	Unisex	8 X 8	64	Staff Break Room	
7.0	Staff Lockers	(14) Full (6) Half	5 X 8	40	Staff Break Room	Space for (4) occupants at one time. Small counter
8.0	General Library Storage	None	8 X 10	80	Staff Work Space	Shelving for supplies
9.0	Library Dock	None	10 X 15	150	Staff Work Space	ILL receiving, loading w/ exterior access Incorporate Book Return space
10.0	Data, IT Server Room	None	6 X 10	60	Staff Work Space	Ventilation
	General House Keeping	None	6 X 10	60	Staff Work Space, Dock	Janitorial sink, cleaning and paper supplies
11.0	Public Restrooms					
	* Men	(5) Sta.	13 X 20	260	Library Programs Room	(3) WC, (2) Urinals, (2) Lavatories
	* Women	(5) Sta.	13 X 20	260	Library Programs Room	(5) WC, (3) Lavatories, Baby changing sta.
	Drinking Fountain	None	5 X 6	30	Library Programs Room	standing and accessible fountains



**Jefferson County Library District**

7-Feb-20

Functional Space Program	Space Function	Occupancy	Size	Area	Program Function:	Adjacency	Library Support Functions	Notes
	12.0	Friends Work Room	(4) Seated	12 x 24	288	Staff Work Room	Work Tables, Shelving, (2) desks Intake and processing. (10) Type A2 units = 1,260 vols.	
	13.0	Friends Storage	None	12 x 20	240	Friends Work Room	Industrial Shelving	
	14.0	Mechanical Room	None	12 x 20	240	Dock, exterior wall Roof top access	Verify HVAC Systems	
	15.0	Electrical Room	None	12 x 12	144	Dock, exterior wall	Near Transf. Vault	
	16.0	Grounds Maintenance	None	10 x 10	100	Exterior Access	Landscape Maintenance equipment Space for Fire Riser, Irrigation Controller	
				<b>Total Net Area</b>	<b>3511</b>			

# Jefferson County Library District

Functional Space Program	Occupancy	Size	Area	Program Function:	Library Collections	7-Feb-20
Space Function				Adjacency	Notes	
1.0 Adult Fiction	None	16 X 30	480	Reading, Lounge, Circ Desk Self Check, Holds	Paper Backs	6,480 vols.
2.0 Adult Non-Fiction	None	16 X 30	480	Reading, Lounge, Circ Desk Self Check Holds	Paper Backs	5,400 vols.
3.0 Young Adult	None	20 X 30	600	Reading, Lounge, Circ Desk Self Check Holds, Study Rms.	Data/IT Ports available, (4) Sta.	3,600 vols.
4.0 Children	None	16 X 30	480	Children's Section	(3) Computer Sta.	6,750 vols.
* Easy Readers						
* Board Books						
* puzzles/Games						
5.0 Reference	None	9 X 15	135	Reading, Lounge, Study Rooms		450 vols.
6.0 Periodicals	None	5 X 12	60	Reading, Lounge		48 subscriptions
7.0 Large Format	None	7 X 8	56	Reading, Lounge, Study Rms. Atlas Stand	(2) 10-drawer flat files 48" wide X 36" deep	
8.0 Electronic Media	None	20 X 30	600	Circ Desk, Holds	Pull-out Trays	
* Audio Books						1,800 units
* DVD's						5,400 units
* CD's						360 units
* Vinyl Records		6 X 12	60		(3) Browsing Bins	
9.0 Spanish Language	None			Reading, Lounge		
* Adult		5 X 21	105		In Adult Collection	504 vols.
* Young Adult		9 X 21	189		In Young Adult Collection	1,008 vols.
* Children		9 X 18	162		In Children's Collection	1,620 vols.
10.0 Special Collections	None					
* Genealogy		5 X 18	90	Reading Tables		1,080 vols.
* Local History		5 X 18	90			1,296 vols.
11.0 Friends Book Sales	None			Library Collections	Shelving within the Collections area	
Hard Back		5 X 15	75			630 vols.
Paperback						1,050 vols.
<b>Total Net Area</b>						<b>3662</b>

Jefferson County Library District					Program Function:	Library Collections	7-Feb-20
Functional Space Program							
Space	Function	Occupancy	Size	Area	Adjacency	Notes	
12.0	Library Collections Shelving	Print Media					
	Single Sided Shelf Unit		12" Depth Varies		Shelf Type A1: 7 Shelves	12" Deep	84" High
	13.5 SF Foot Print				Shelf Type A2: 7 Shelves	10" Deep	84" High
			42" Circulation Aisle Space		Shelf Type B1: 5 Shelves	12" Deep	66" High
					Shelf Type B2: 5 Shelves	10" Deep	66" High
					Shelf Type C1: 3 Shelves	12" Deep	42" High
		36"			Shelf Type C2: 3 Shelves	10" Deep	42" High
	Double Sided Shelf Unit				Collection Shelf Density: 10%-15% open space		
	27 SF Foot Print				Adult: Hard Back	5-6 Units/Linear Foot	
			42" Circulation Aisle Space		Paper Backs:	8-10 Units/Linear Foot	
					Children:	15 Units/Linear Foot	
					Reference:	4-5 Units/Linear Foot	
			12" Depth Varies		Electronic Media:		
					Audio Books:	10 Units/Linear Foot	
					DVD's	10 Units/Linear Foot	
			42" Circulation Aisle Space		CD's	18 Units/Linear Foot	
		36"					
13.0	Periodicals						
	Single Sided Hinged Shelf Unit				Shelf Type D1: 4 Shelves	14" Deep	66" High
14.0	Audio, DVD, CD Cassettes						
	Single/Double Sided Pull-out Shelves				Shelf Type E1: 5 Shelves	10" Deep	66" High
	Alternate: Browser Bins at 42" High				Shelf Type E2: 4 Shelves	10" Deep	42" High

# Jefferson County Library District

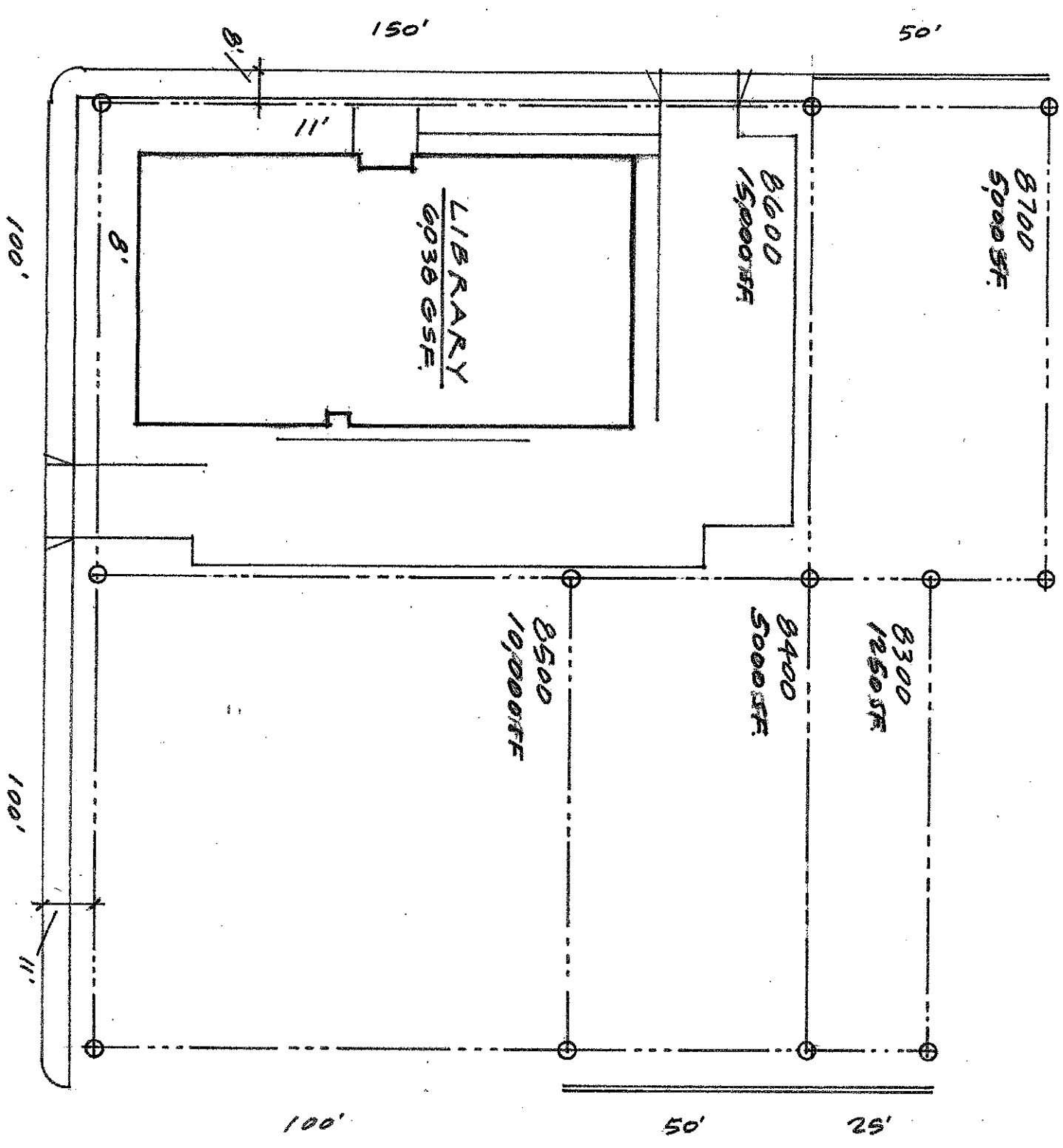
Functional Space Program			Program Space Summary		Current Shelf Units	7-Feb-20
Library Services Functions	25% Factor:	Net SF	5,114	*	3,507	Shelf Units
		Gross SF	1,023		75	(Friends program area under item # 11)
		Total Area	6,137			
Library Support Functions	25% Factor	Net SF	3,511			
		Gross SF	878			
		Total Area	4,389			
Library Collections	25% Factor	Net SF	3,662			
		Gross SF	915.5			
		Total Area	4,578			
Assume Population Growth 30-40 years	58% Increase	Adj. Total Area	7,232	**		
Vertical Circulation	10% Factor	Net SF	616			
		Gross SF	62			
		Total Area	678			
Total Building Area SF			18,436			+ 1,000 sq ft for design
Total Holdings	At 20% out	Library Borrowed	35,100	***		
		Total	7,020			
		Assuming 10-15% open space	42,120			47,312 High density
Notes						
* Current shelf unit inventory as per collection holdings aggregated SF estimate		Shelf density unknown				
** Assuming served population 34,000 in thirty years						
*** Rule of thumb						

*Elevator 8'600, \$65,000*  
*PARKING 3 spaces for every 1,000 sq ft.*

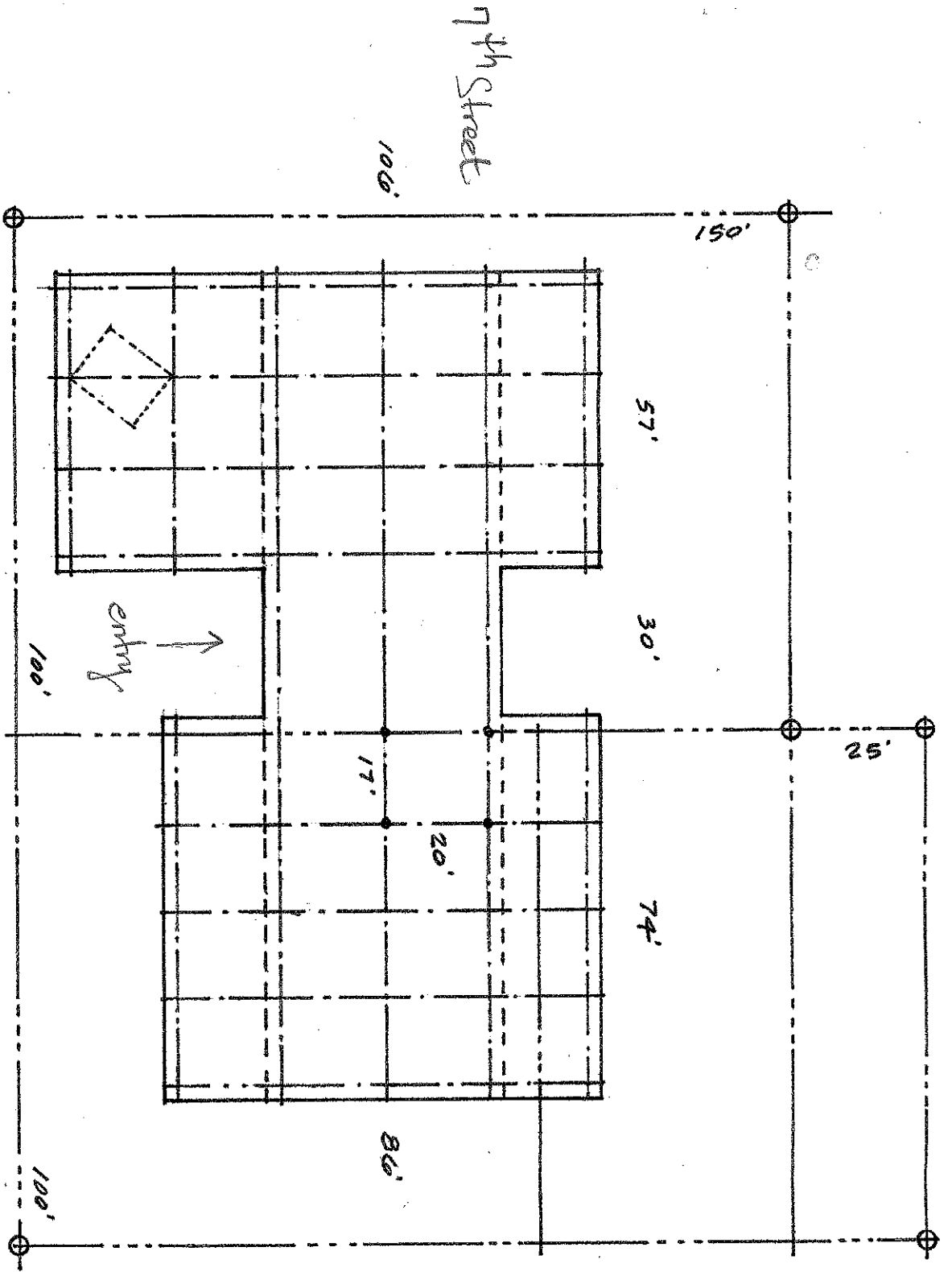
Jefferson County Library District		2019 Oregon State Library Data OR 0037		7-Feb-20
Functional Space Program				
1	Population Served in Jefferson County		19,761 2019 Census Data	
2	Library Gross Area in Square Feet		6,148 Outside of walls	
3	Website Visits		12,640	
4	Internet Stations		6	
5	Volunteers		22	
	Volunteer Hours		2,995	
6	Total ILL		9,465 All sources	
7	Total Number of Library Programs		612	
	Total Attendance		14,101	
8	Circulation		148,816 Transactions	
	Physical Items		115,383	
9	Collections			
	Print		39,312	
	Electronic		8,000 Audio Books, CD's, DVD's	
	Total		47,312	
10	Library Visits		75,980 (Door counter?)	
11	Registered Borrowers		6,434 on record?	
12	Total Staff		seven-eight	

JEFFERSON COUNTY LIBRARY DISTRICT  
FUNCTIONAL SPACE PROGRAM / DIAGRAMS  
 FRED C. GAST JR. ARCHITECT, LLC. FEB. 2020

\$250 sq ft



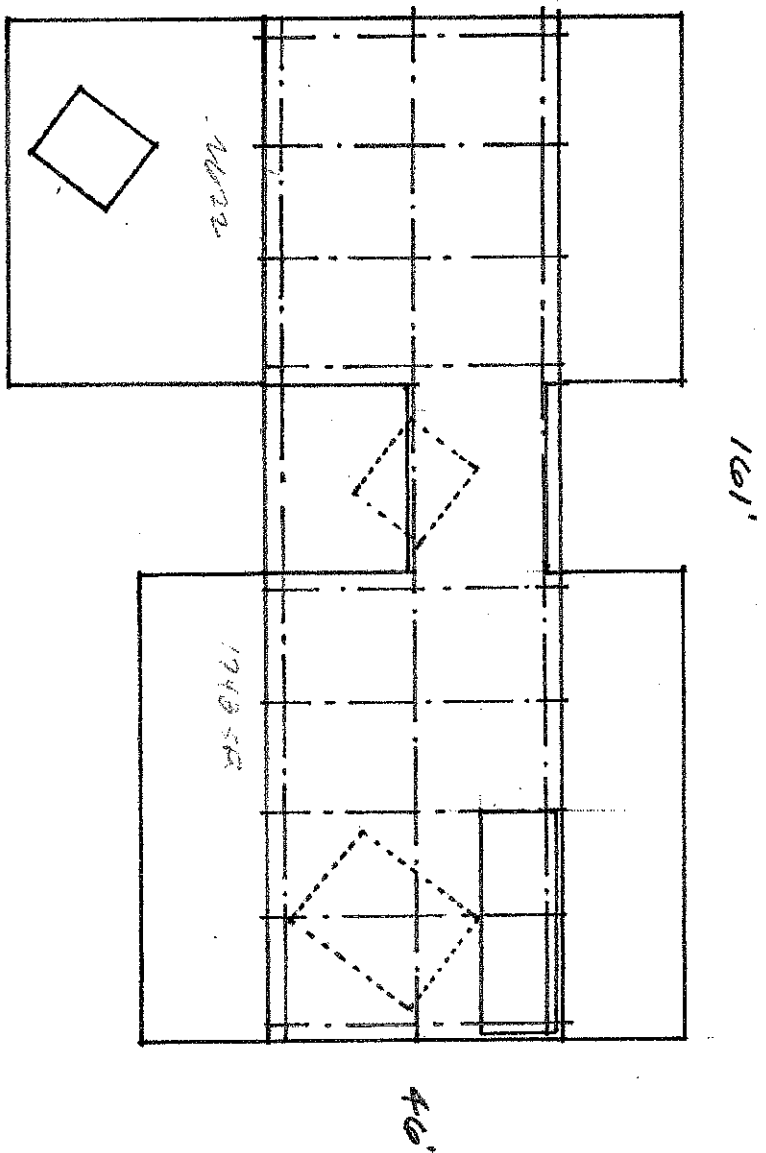
EXISTING SITE PLAN  
 1" = 30'-0"



GROUND FLOOR 13,700 GSF.

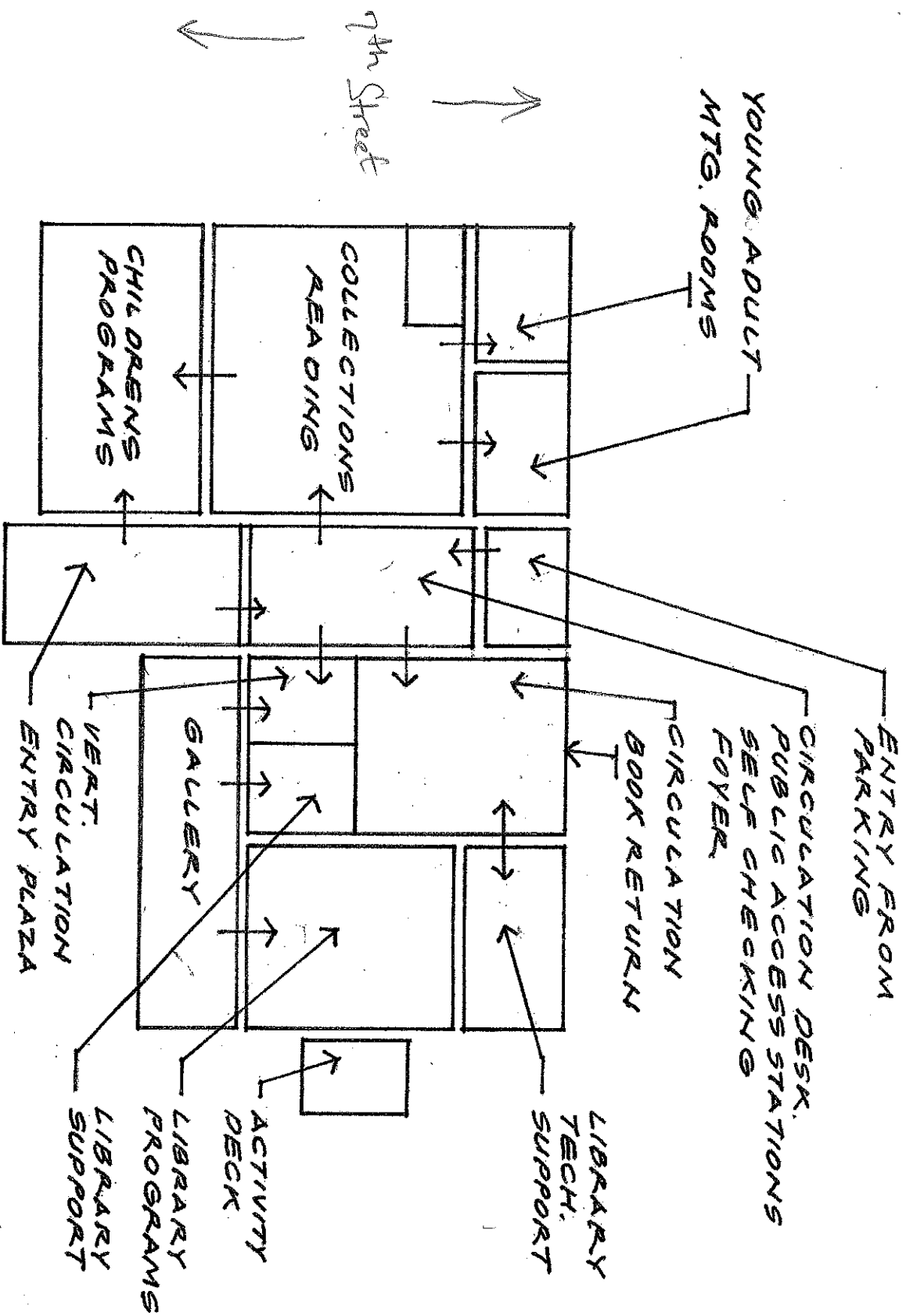
LIBRARY DIAGRAMS

TOTAL 18,710 GSF.  
1" = 30'-0"

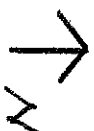
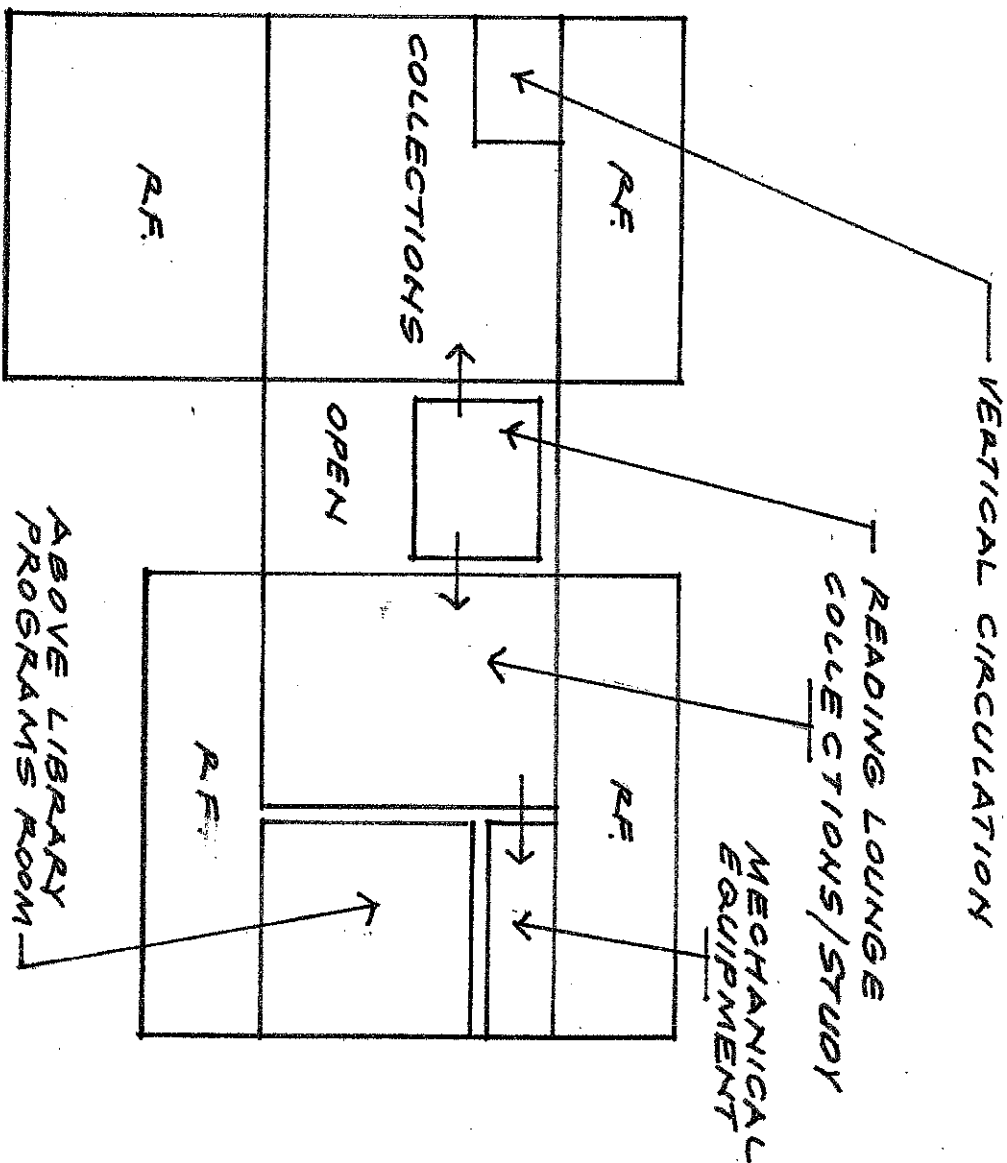


SECOND FLOOR 4,924 GSF.

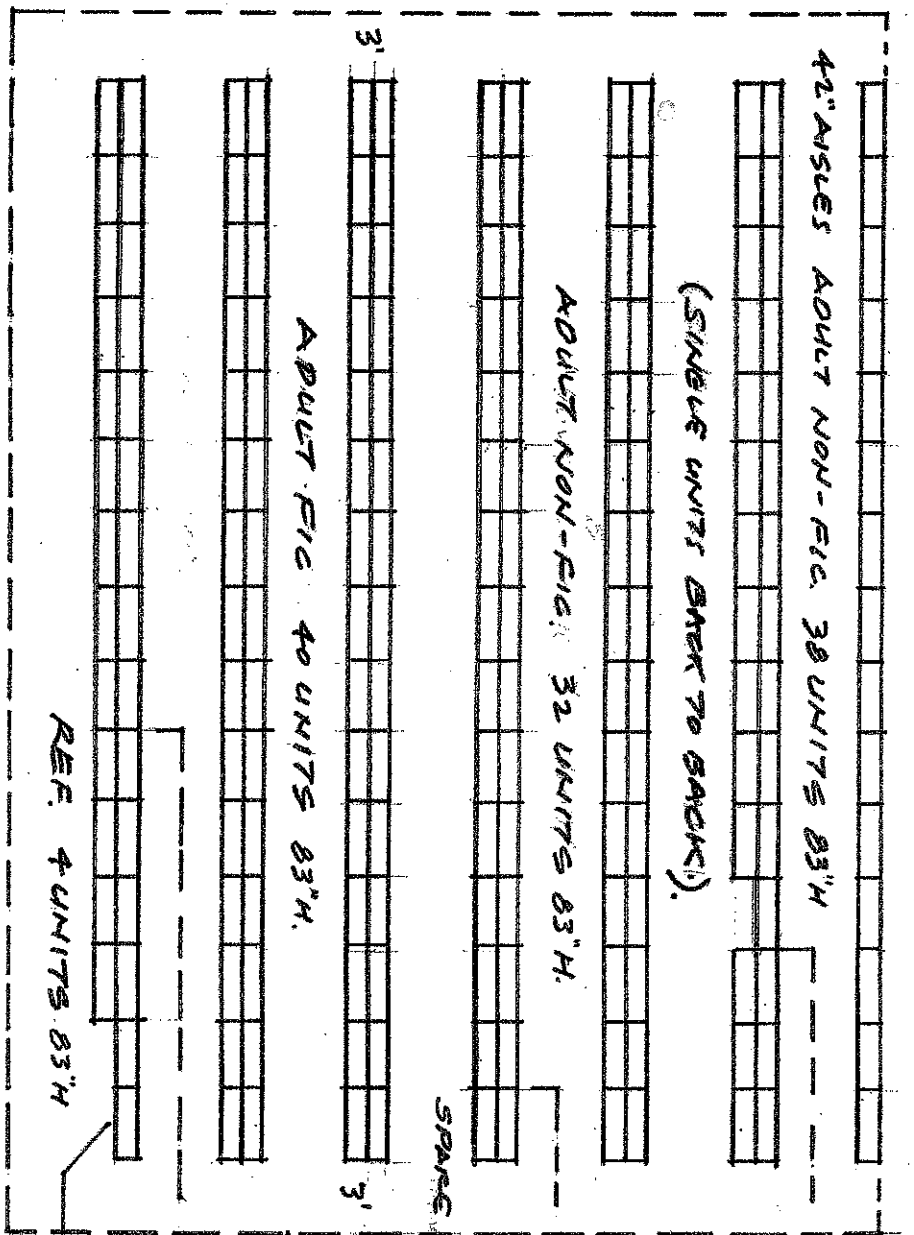
GROUND FLOOR  
LIBRARY PROGRAM SPACES  
1" = 30'-0"



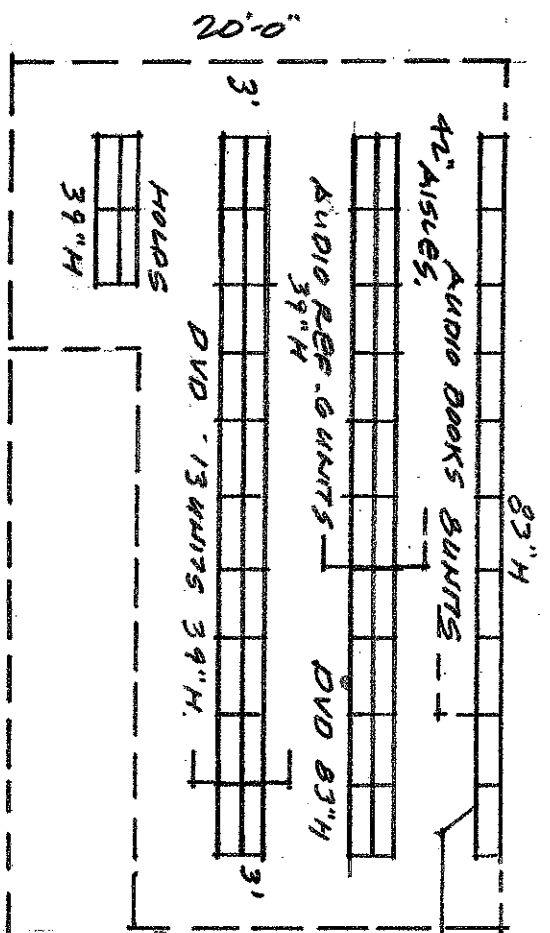
SECOND FLOOR



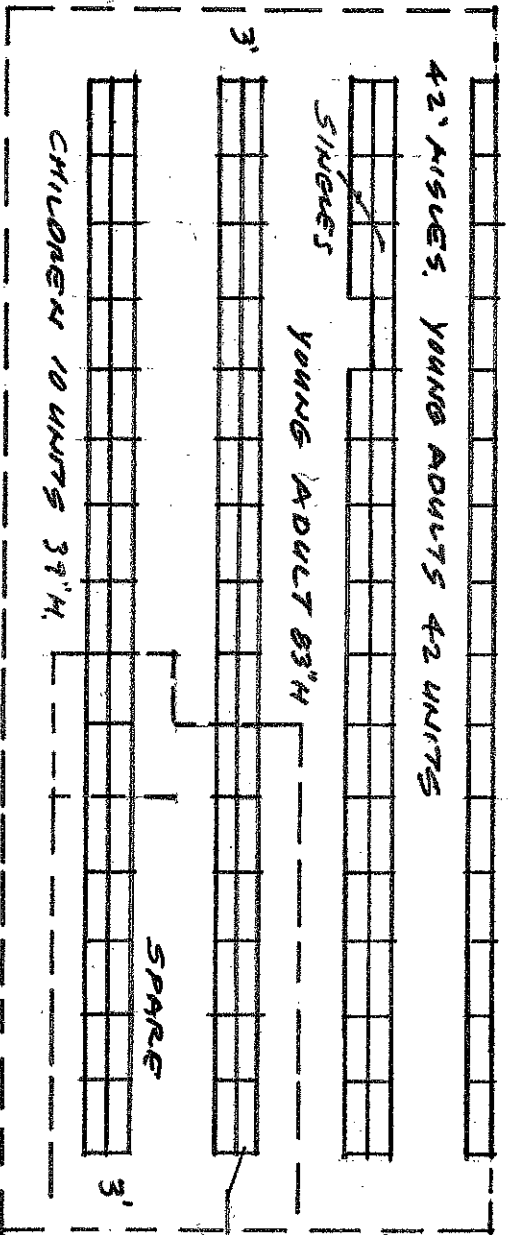




1836 SF.  
PAPER BACKS  
2 UNITS 39" H.



7072 AREA = 3507 SF.  
600 SF.  
36'-0"  
MUSIC CDS  
47" H.



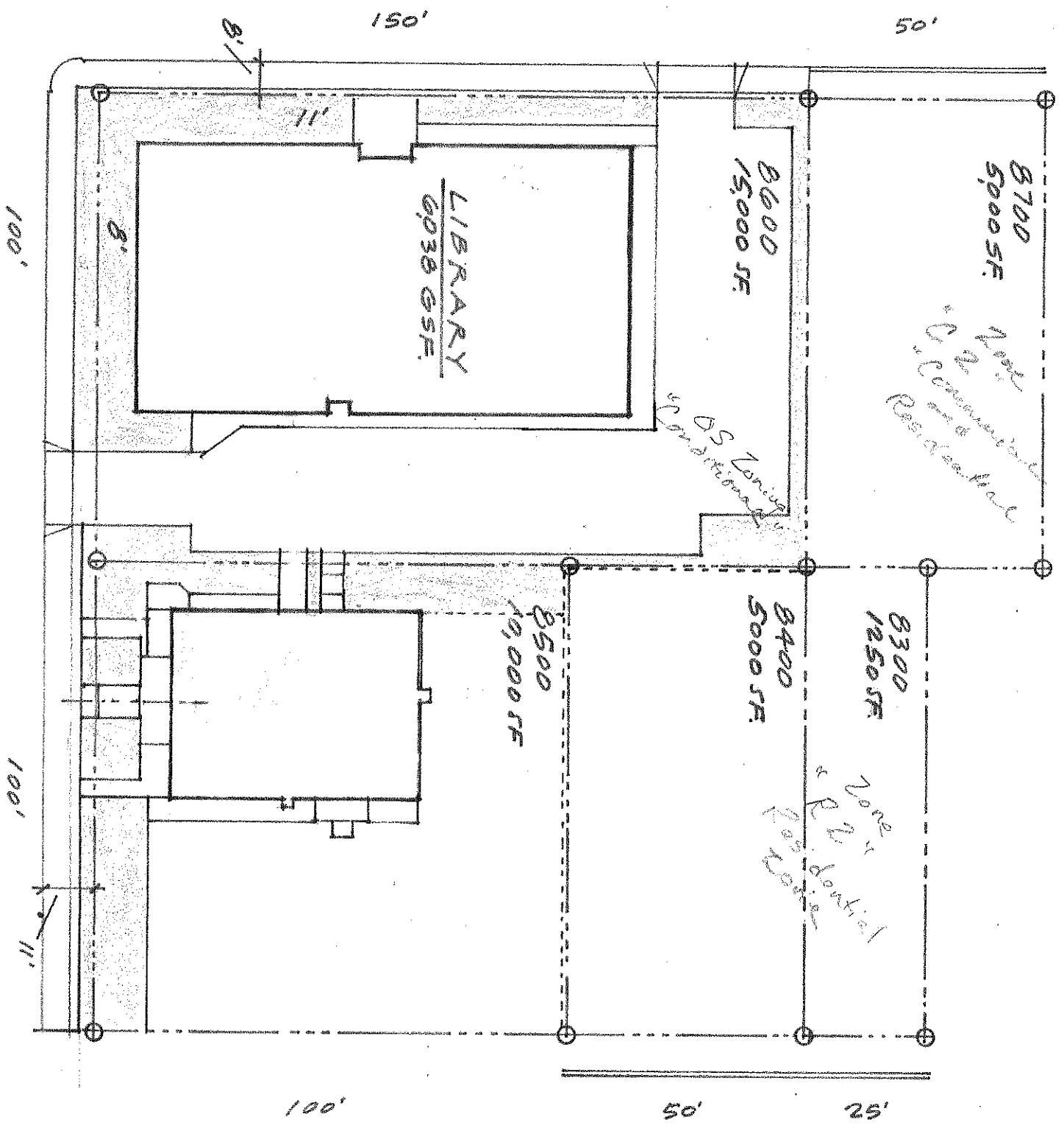
1071 SF.  
CHILDREN  
8 UNITS 39" H.

UCLD EXISTING HOLDINGS, SHELF UNITS  
1/8" = 1'-0"

JEFFERSON COUNTY LIBRARY DISTRICT  
 FUNCTIONAL SPACE PROGRAM/DIAGRAMS  
 FRED C. GAST JR. ARCHITECT, LLC. FEB. 2020

Zone  
C2

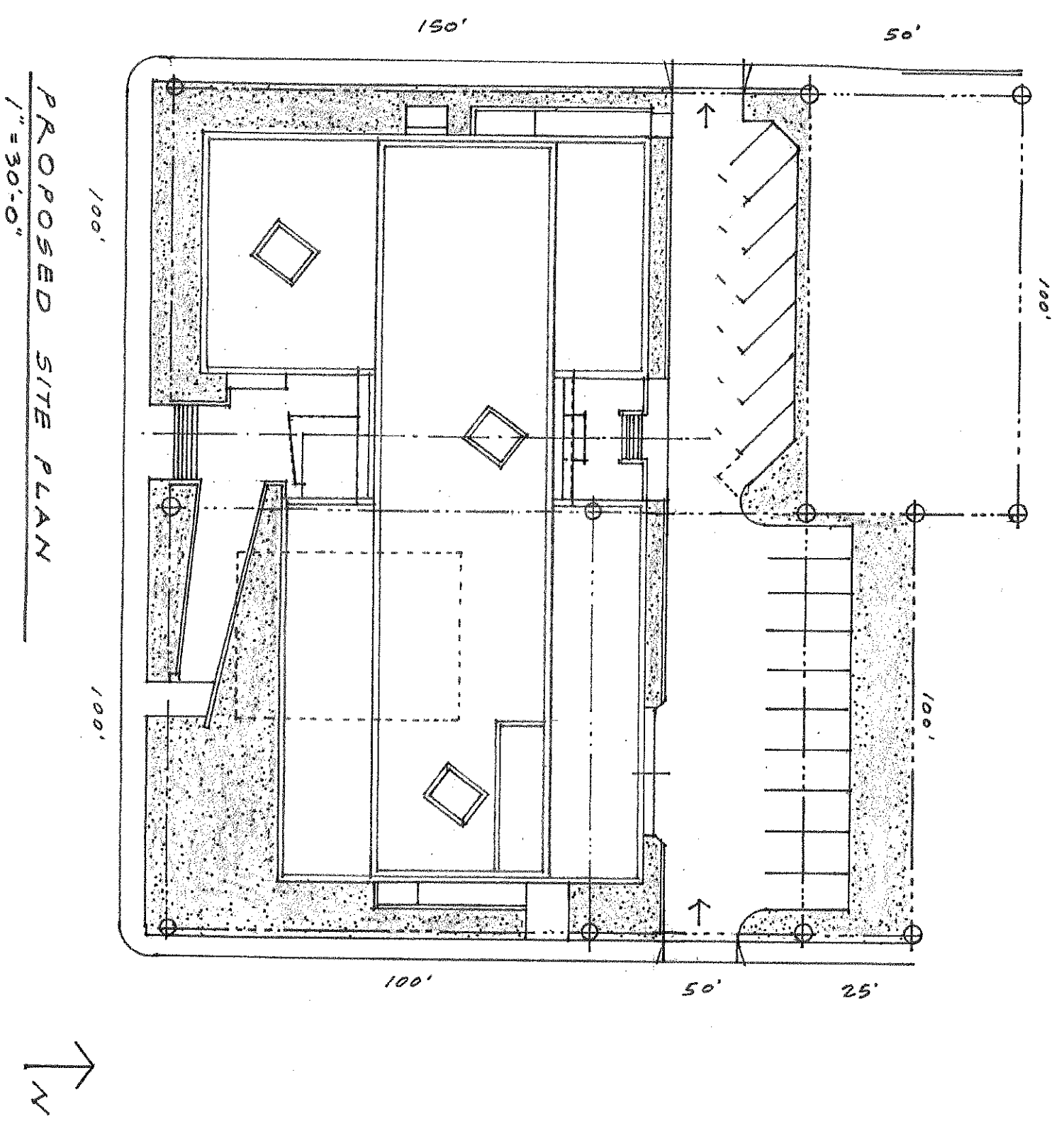
4/6



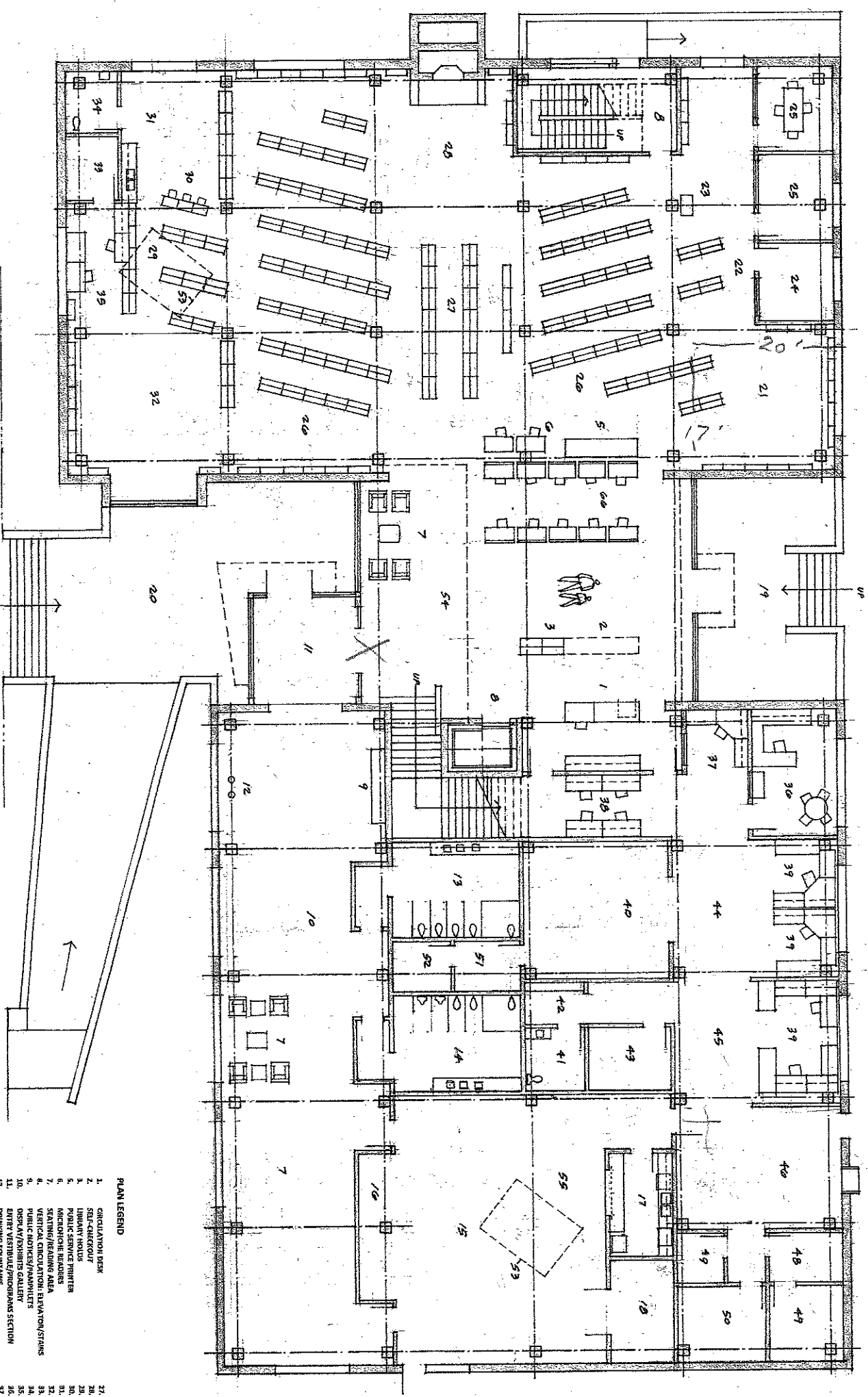
EXISTING SITE PLAN  
 1"=30'-0"  
 F.C. GAST



JEFFERSON COUNTY LIBRARY DISTRICT  
FUNCTIONAL SPACE PROGRAM / CONCEPT DESIGN  
FRED C. GAST JR. ARCHITECT, LLC MARCH 2020



JEFFERSON COUNTY LIBRARY DISTRICT  
 FUNCTIONAL SPACE PROGRAM / CONCEPT DESIGN  
 FRED C. GAST JR. ARCHITECT, LLC  
 MARCH 2020

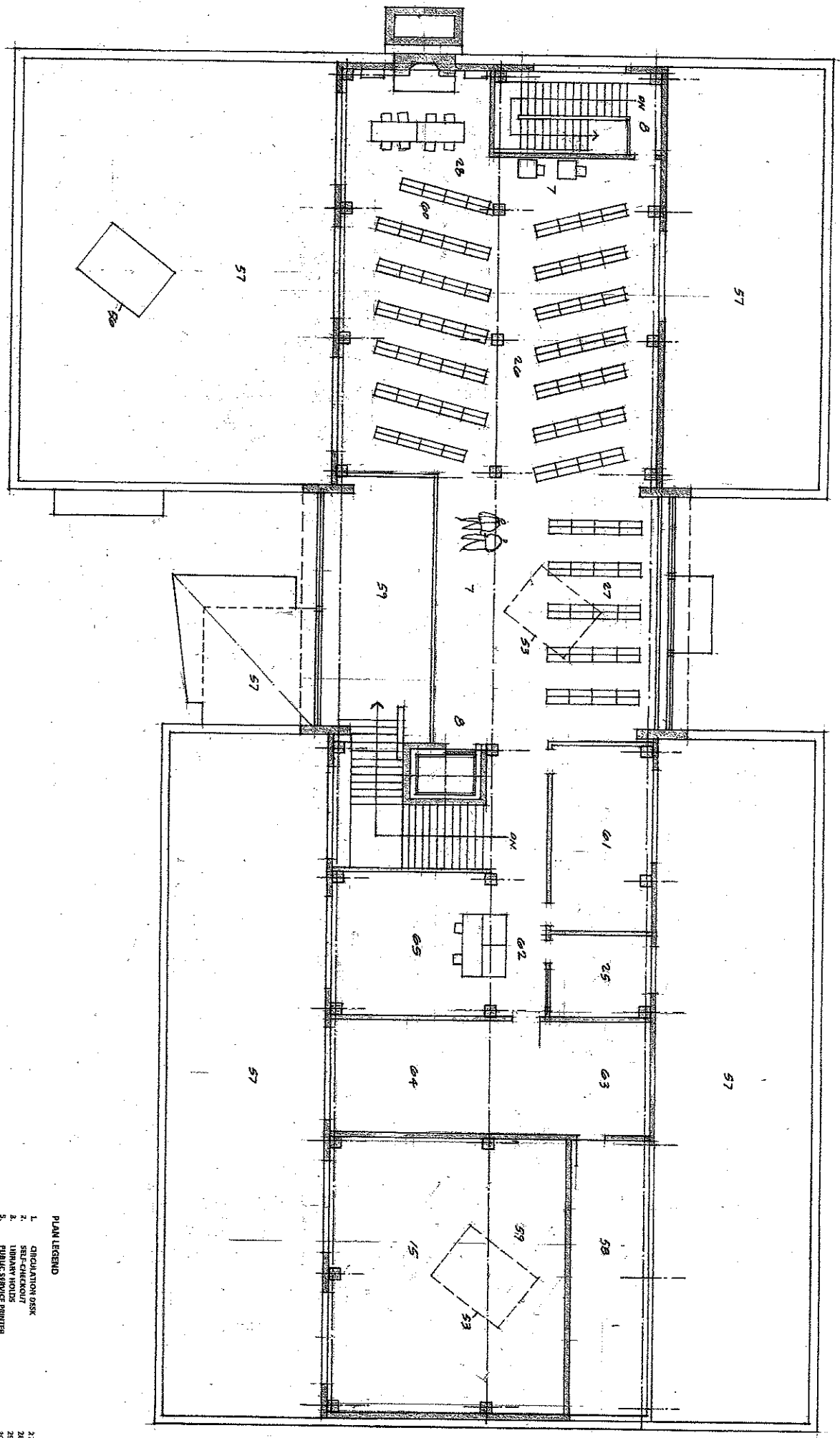


GROUND FLOOR PLAN  
 1/8" = 1'-0"  
 15,660 SF

PLAN LEGEND

- |  |                                   |                                   |
|--|-----------------------------------|-----------------------------------|
| 1. CIRCULATION DESK                      | 31. ELECTRONIC MEDIA              | 58. SKYLIGHT ABOVE                |
| 2. STAIRS                                | 32. READING INSTRUCTION           | 59. OPEN SPACE ABOVE              |
| 3. LIBRARY HOURS                         | 33. CHILDREN'S COLLECTION         | 60. UPPER SPACE ABOVE             |
| 4. PUBLIC SERVICE HUB                    | 34. CHILDREN'S COMPUTERS          | 61. ROOF SKYLIGHT                 |
| 5. MICROFILM READER                      | 35. CHILDREN'S ACTIVITIES         | 62. ROOF AREA                     |
| 6. SEATING/READING AREA                  | 36. CHILDREN'S STORY TIME         | 63. ROOF TOP MECHANICAL EQUIPMENT |
| 7. VERTICAL CIRCULATION: ELEVATOR/STAIRS | 37. CHILDREN'S STORAGE            | 64. OPERATOR/CONTROL COLLECTION   |
| 8. PUBLIC ACCESS/STAIRS                  | 38. CHILDREN'S LIBRARY            | 65. BOARDING/MEETING ROOM         |
| 9. PSYCHIC/HEALTH SERVICES SECTION       | 39. LIBRARY DIRECTOR              | 66. FRIENDS STORAGE               |
| 10. PSYCHIC/HEALTH SERVICES SECTION      | 40. LIBRARY MANAGER               | 67. FRIENDS WORK ROOM             |
| 11. DINING POINTS                        | 41. VOLUNTEER WORK STATIONS       | 68. FRIENDS SALES COLLECTIONS     |
| 12. WOMEN'S RESTROOM/CHANGING STATION    | 42. LIBRARY STAFF WORK STATIONS   | 69. PUBLIC ACCESS COMPUTERS       |
| 13. MEN'S RESTROOM/CHANGING STATION      | 43. STAFF BREAK/MEETING SPACE     |                                   |
| 14. LIBRARY PROGRAMS MULTI-PURPOSE ROOM  | 44. STAFF RESTROOM                |                                   |
| 15. CLOAK ROOM                           | 45. STAFF RESTROOM                |                                   |
| 16. SERVICE/STAIRS RESTROOM              | 46. STAFF RESTROOM                |                                   |
| 17. PROGRAMS ROOM STORAGE                | 47. STAFF RESTROOM                |                                   |
| 18. MAIN ENTRY PLAZA AND HAMP            | 48. TECHNICAL SERVICES PROCESSING |                                   |
| 19. YOUNG ADULTS LOUNGE/COLLECTIONS      | 49. CIRCULATION PROCESSING        |                                   |
| 20. REFERENCE COLLECTION                 | 50. LIBRARY SERVICE DOCK/ILL      |                                   |
| 21. ATLAS/DICTIONARY STAND               | 51. BOOK RETURN (S)               |                                   |
| 22. TUTORING ROOM                        | 52. STUDY ROOM/SERVER             |                                   |
| 23. STUDY/MEETING ROOM                   | 53. TECHNICAL ROOM/SERVER         |                                   |
| 24. MULTI-PURPOSE/MEETING ROOM           | 54. MEETING/CONFERENCE ROOM       |                                   |
| 25. PHOTO COPY/PRINTING STATION          | 55. ELEVATOR MECHANICAL ROOM      |                                   |
| 26. PHOTO COPY/PRINTING STATION          |                                   |                                   |

JEFFERSON COUNTY LIBRARY DISTRICT  
 FUNCTIONAL SPACE PROGRAM / CONCEPT DESIGN  
 FRED C. GAST JR. ARCHITECT, LLC.      MARCH 2020



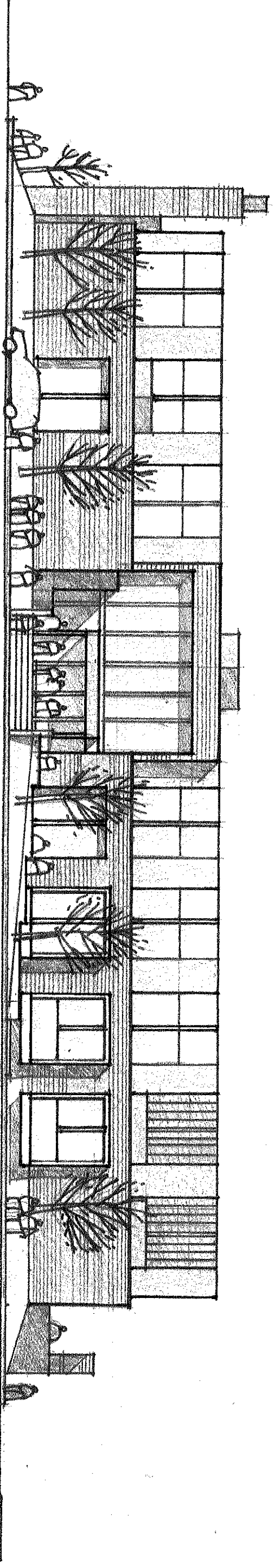
PLAN LEGEND

- |   |                                   |                                   |
|---|-----------------------------------|-----------------------------------|
| 1. CIRCULATION DESK                       | 27. ELECTRONIC MEDIA              | 53. SATLIGHT ABOVE                |
| 2. SELF-CHECKOUT                          | 28. READING ROOM/NOOK             | 54. OPEN ABOVE                    |
| 3. LIBRARY HOUSE                          | 29. PUBLIC SERVICE PRINTER        | 55. UPPER SPACES ABOVE            |
| 4. PUBLIC SERVICE PRINTER                 | 30. CHILDREN'S COMPUTERS          | 56. ROOFED AREA                   |
| 5. MICROFORM READING                      | 31. CHILDREN'S ACTIVITIES         | 57. ROOF TOP MECHANICAL EQUIPMENT |
| 6. SEATING/READING AREA                   | 32. CHILDREN'S STORY TIME         | 58. OPEN TO BELOW                 |
| 7. VERTICAL CIRCULATION ELEVATOR/STAIRS   | 33. CHILDREN'S STORAGE            | 59. GENEOLOGY/HISTORY COLLECTION  |
| 8. PUBLIC NOTICE/ANNOUNCEMENTS            | 34. CHILDREN'S RESTROOM           | 60. BOARD/MEETING ROOM            |
| 9. STUDY PARTNER'S EQUILIBRY              | 35. CHILDREN'S LIBRARY/AV         | 61. LARGE FORMAT/MAKS             |
| 10. STUDY PARTNER'S EQUILIBRY SECTION     | 36. LIBRARY DIRECTOR              | 62. FRIENDS STORAGE               |
| 11. DRINKING FOUNTAINS                    | 37. VOLUNTEER WORK STATIONS       | 63. FRIENDS WORK ROOM             |
| 12. DRINKING FOUNTAINS                    | 38. LIBRARY STAFF WORK STATIONS   | 64. FRIENDS MEETING ROOM          |
| 13. WOMEN'S RESTROOM/CHANGING STATION     | 39. STAFF BREAK/MEETING SPACE     | 65. FRIENDS ACCESS COMPARTMENT    |
| 14. MEN'S RESTROOM/CHANGING STATION       | 40. STAFF RESTROOM                |                                   |
| 15. LIBRARY PROGRAMS MULTI-PURPOSE ROOM   | 41. STAFF LOCKERS                 |                                   |
| 16. CLOAK ROOM                            | 42. GENERAL LIBRARY STORAGE       |                                   |
| 17. SERVICE/STAIRING STATION              | 43. TECHNICAL SERVICES PROCESSING |                                   |
| 18. NON-PROFIT VENDOR STORAGE             | 44. LIBRARY SERVICE PRINTER       |                                   |
| 19. MAIN ENTRY PLAZA AND RAMP             | 45. LIBRARY SERVICE DESK          |                                   |
| 20. YOUNG ADULTS LOUNGE/COLLECTIONS       | 46. BOOK RETURN IS                |                                   |
| 21. REFERENCE COLLECTION                  | 47. GENOLOGY/HISTORY COLLECTION   |                                   |
| 22. ATLAS/DICTIONARY STAND                | 48. ELECTRICAL ROOM/SERVER        |                                   |
| 23. TITLING ROOM                          | 49. MECHANICAL ROOM               |                                   |
| 24. STUDY/MEETING ROOM                    | 50. MECHANICAL ROOM               |                                   |
| 25. STUDY/MEETING ROOM                    | 51. ELEVATOR MECHANICAL ROOM      |                                   |
| 26. PERIODICALS/NEW TITLES (GROUND FLOOR) |                                   |                                   |

SECOND FLOOR PLAN  
 1/8" = 1'-0"  
 6700 SF

JEFFERSON COUNTY LIBRARY DISTRICT  
FRED C. GAST JR. ARCHITECT, L.L.C.

V  
V  
V  
V  
V



SOUTH ELEVATION